

ANNUAL CHANGES

General Pattern: Consecutive Years Show Grass Increase And Decrease Following Dry And Wet Summers

[Photo Station Direction 246.1](#)

1953

June-September

Precipitation: 149 mm

SPEI: -1.6

June



September



1954

June-September

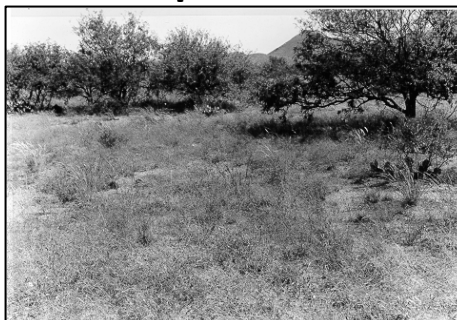
Precipitation: 310 mm

SPEI: 1.3

June



September



1955

June-September

Precipitation: 315 mm

SPEI: 1.2

June



September



1956

June-September

Precipitation: 140 mm

SPEI: -1.6

June



October



Standardized Precipitation-Evaporation Index (SPEI) from 1950 to 1960

Summer, June-September, 1895-2023

Lat. 31.8326, Long. -110.8488

[SPI Explorer Tool](#)

