



COLLEGE OF AGRICULTURE
AND LIFE SCIENCES
COOPERATIVE EXTENSION



CONSERVATION &
ADAPTATION
RESOURCES
TOOLBOX



SANTA RITA
EXPERIMENTAL
RANGE



Agricultural Research Service
U.S. DEPARTMENT OF AGRICULTURE

**GRASSLAND RESILIENCE WORKSHOP SERIES:
BRUSH MANAGEMENT & SOIL HEALTH
October 20, 2023
Santa Rita Experimental Range
Green Valley, AZ**

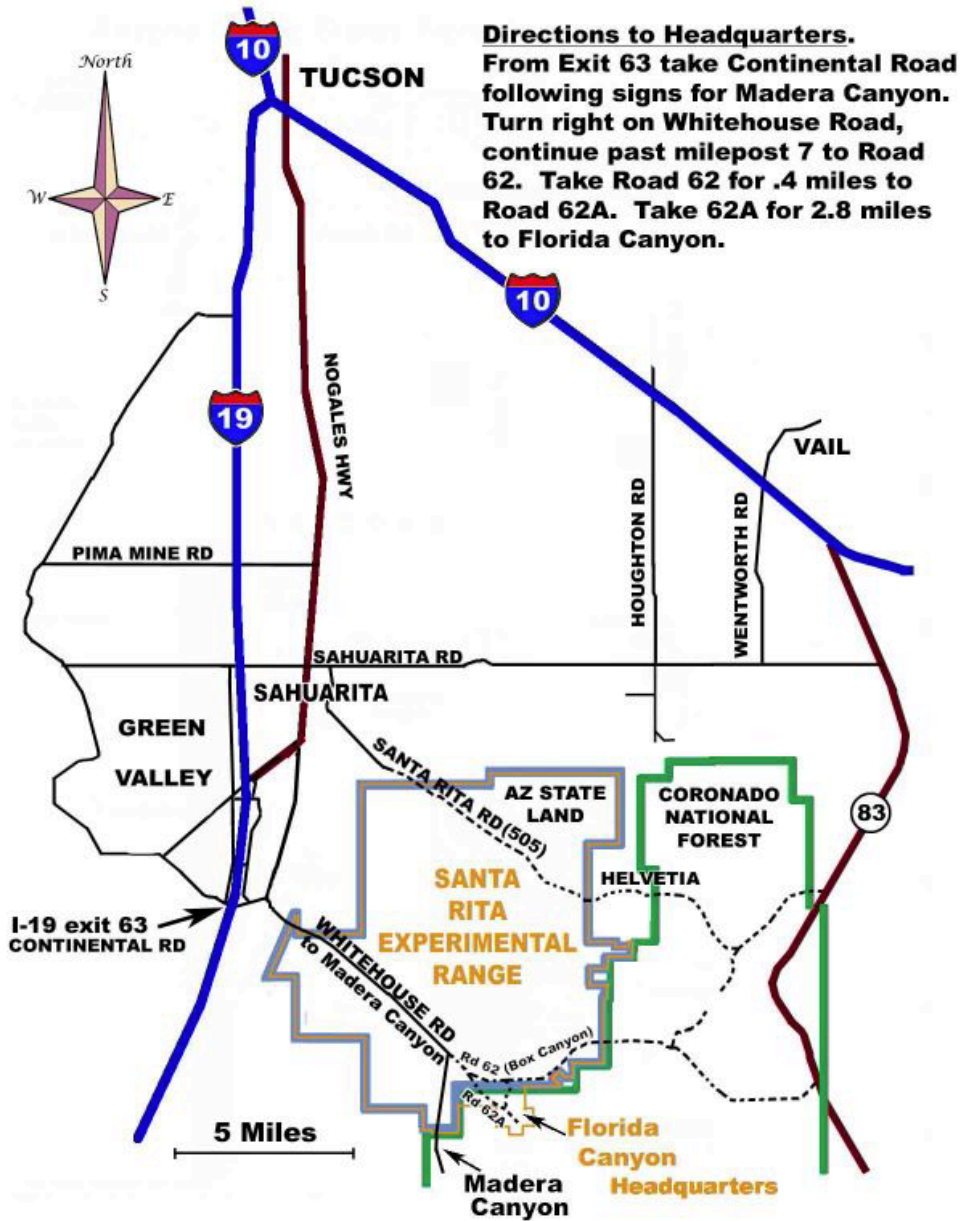
- 9:00 am **Welcome and Introductions at Florida Station Headquarters, SRER**
Brett Blum, SAES-University of Arizona
- 10:00 am **Station 1: Miner's Hill Site**
Brett Blum, SAES-University of Arizona
Austin Rutherford, USDA-Agricultural Research Service
Rachel Gallery, SNRE-University of Arizona
- 11:30 am **Station 2: RestoreNet Site**
Laura Shriver, United States Geological Survey
- 12:30 pm **Lunch at USDA-ARS Watersheds & Station 3: Soil Sampling**
Mary Nichols, Agricultural Research Service – Southwest Watershed Research Center
Samantha Carillo, USDA-Natural Resource Conservation Service
- 1:45 pm **Station 4: D-DIRT Site**
Heather Throop, Arizona State University
- 2:30 pm **Station 5: DFFM site**
Johnathan Pelak, Dept. of Forestry and Fire Management
- 3:30 pm **Station 6: Media Luna Site**
Brett Blum, SAES-University of Arizona
Julia Guglielmo, Altar Valley Experimental Range
Ariel Léger, University of Arizona
- 4:30 pm **Closing Remarks and Adjourn**
Brett Blum, SAES-University of Arizona

Santa Rita Experimental Range

27000 S. Florida Canyon

Green Valley, AZ 85614

United States of America





1937 photo of Entrance to Florida Station



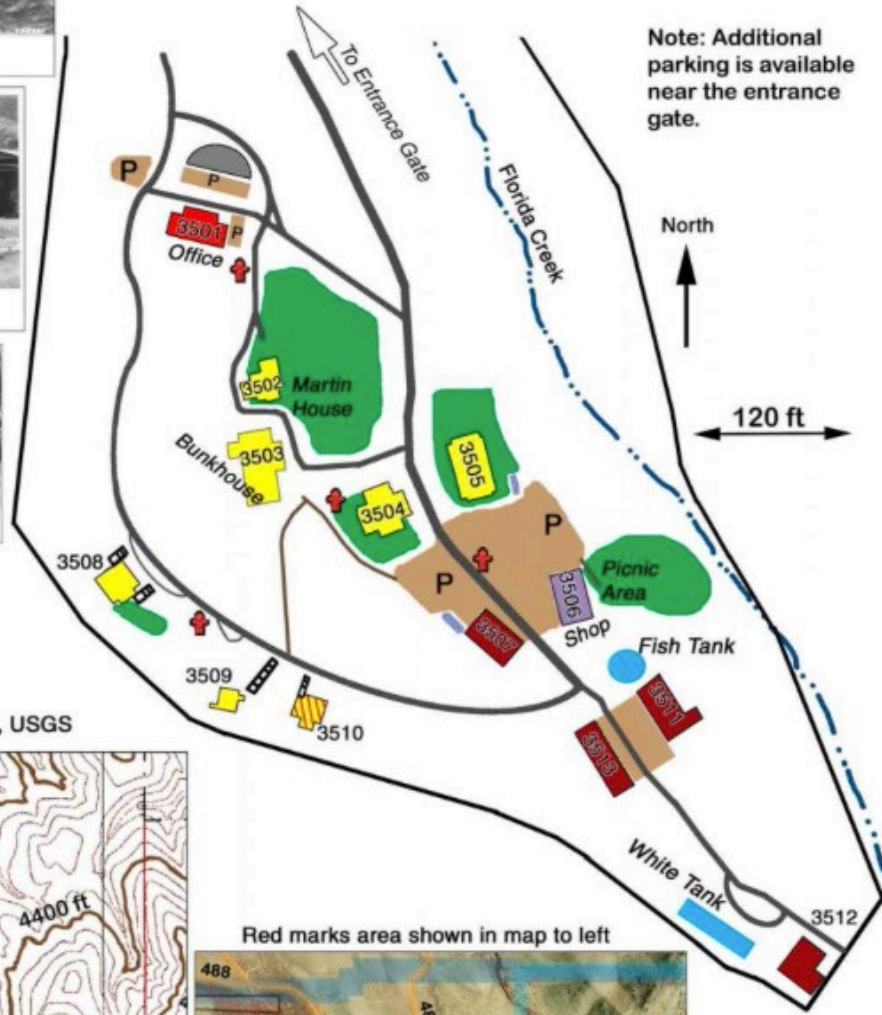
1932 photo of Tucson Natural History Society Meeting



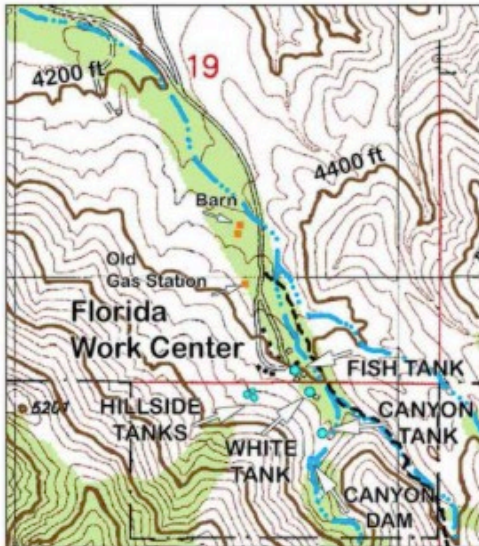
1934 photo of Bunkhouse (1931) and Cabin (1934)

Santa Rita Experimental Range Field Headquarters -- Florida Station

Managed by the University of Arizona with a Special Use Permit from
The US Forest Service, Coronado National Forest
(Florida Station is also known as Florida Work Center)



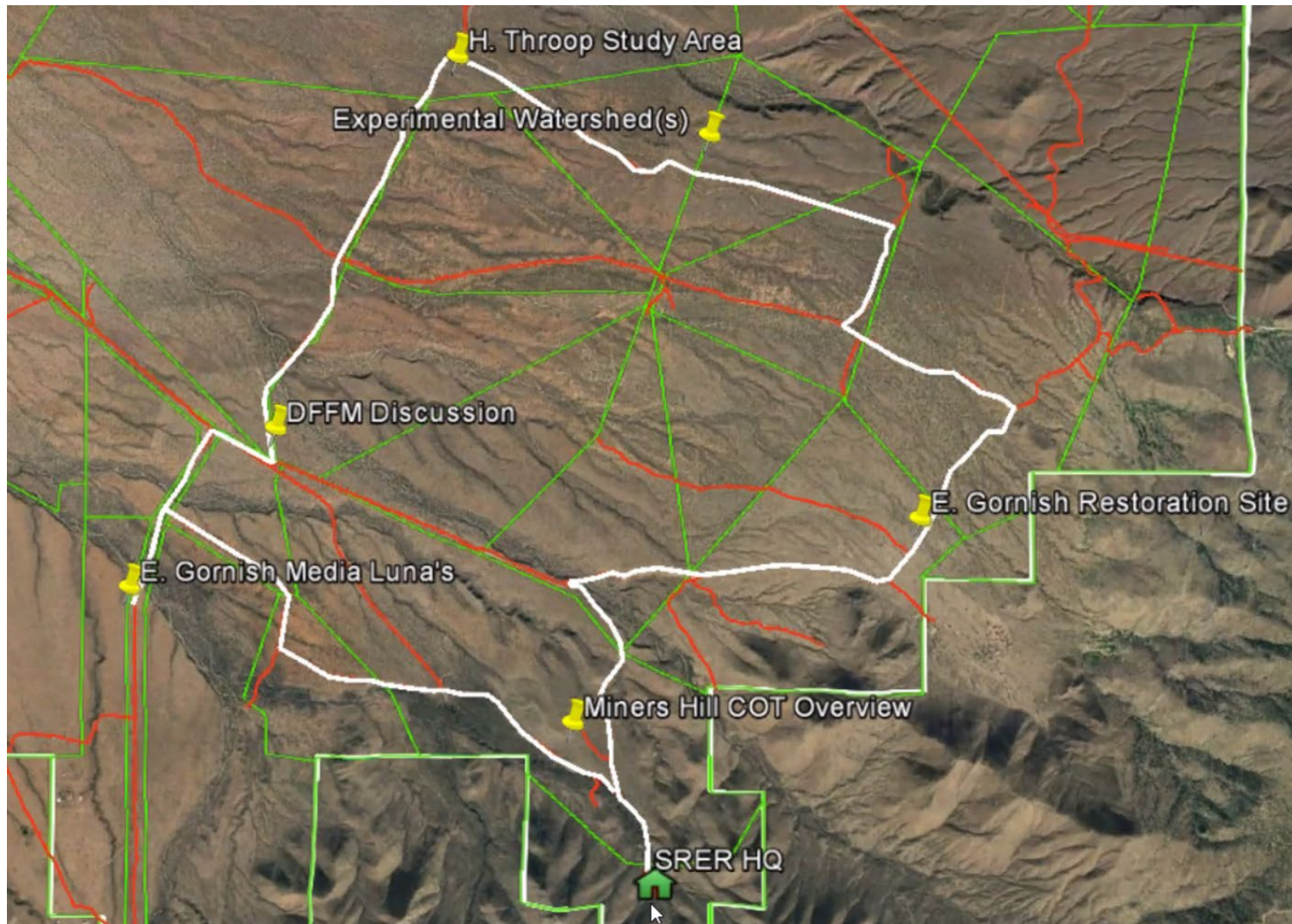
Portion of Helvetia Quad, USGS



Red marks area shown in map to left



ROUTE FOR SANTA RITA EXPERIMENTAL RANGE FIELD DAY



Issued in furtherance of Cooperative Extension work, acts of May 8 and June 30, 1914, in cooperation with the U.S. Department of Agriculture, Ethan Orr, Associate Director, Cooperative Extension, College of Agriculture Life Sciences, The University of Arizona. The University of Arizona is an equal opportunity, affirmative action institution. The University does not discriminate on the basis of race, color, religion, sex, national origin, age, disability, veteran status, or sexual orientation in its programs and activities.